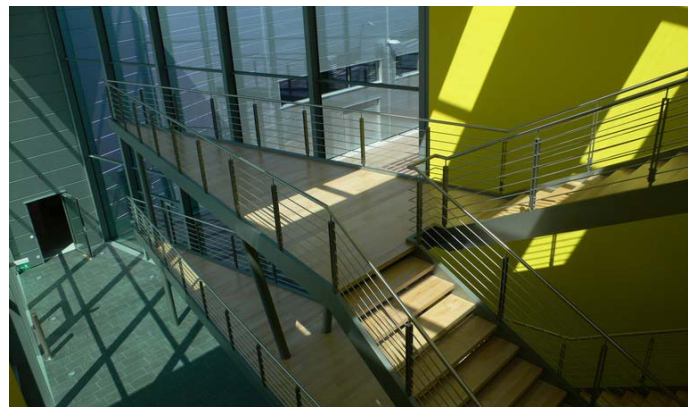


Würth Solar, CISfab
Architects: Djordjevic-Müller Architekten, Stuttgart
Kraft + Kraft Architekten, Schwäbisch Hall

Würth Solar
CISfab
Alfred-Leikam-Str. 25
Schwäbisch Hall
Germany

Year built: 2006
Furniture:
**ambition, activation,
olé, mr. charm, yeah!**
talk about, no limits



With high sales in CIS thin-film photovoltaic technology as its aim, the innovative company Würth Solar has built a new headquarter in Schwäbisch Hall. From autumn 2006, mass-produced CIS modules will be manufactured there for the first time. The bright entrance and staircase complex penetrates the office building like a wedge and features a door leading to the production plant. The corporate colours black, red and yellow are displayed by the architecture as well as by the furnishings. For the 75 workstations in administration envisaged in the first phase of construction, only furniture from Sedus was selected.



Cafeteria furniture with **olé** chairs and **no limits** tables in Würth Solar's corporate colours.
Photos: © Sedus



Würth Solar, CISfab
Architects: Djordjevic-Müller Architekten, Stuttgart
Kraft + Kraft Architekten, Schwäbisch Hall

Würth Solar
CISfab
Alfred-Leikam-Str. 25
Schwäbisch Hall
Germany

Year built: 2006
Furniture:
ambition, activation,
olé, mr. charm, yeah!
talk about, no limits



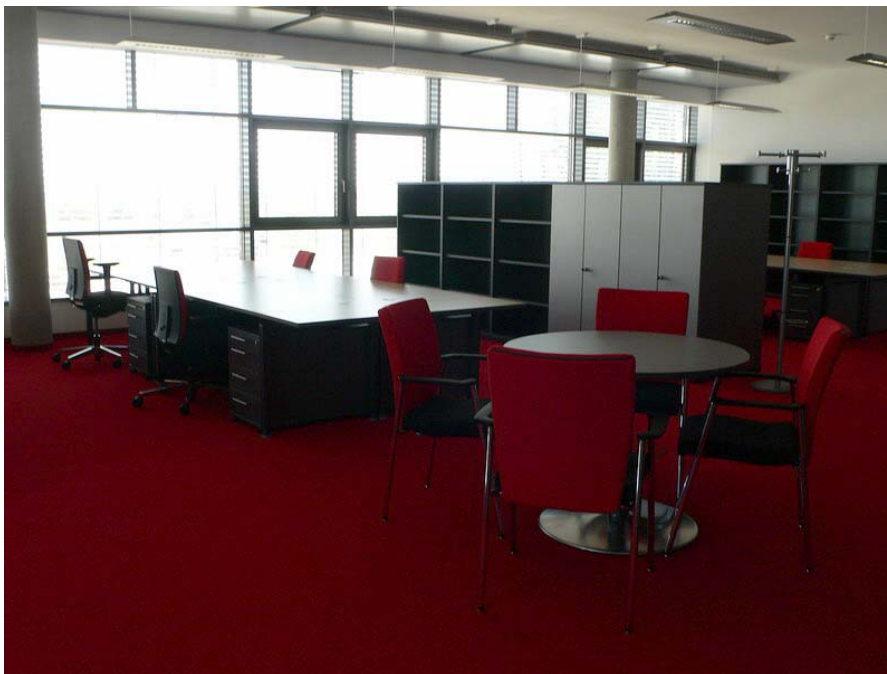
The large conference room (top) which can be partitioned features **mr. charm** chairs and **talk about** tables. On the right is a workstation for four people, featuring the **ambition** range of desks and **yeah!** swivel chairs
Photos: © Sedus

Würth Solar, CISfab
Architects: Djordjevic-Müller Architekten, Stuttgart
Kraft + Kraft Architekten, Schwäbisch Hall

Würth Solar
CISfab
Alfred-Leikam-Str. 25
Schwäbisch Hall
Germany

Completed in: 2006

Furniture:
ambition, activation,
olé, mr. charm, yeah!
talk about, no limits



Open-space office furnished with the **ambition** desk system as well as **activation** cupboards, shelves and cabinets on rollers. **yeah!** swivel chairs for the staff and **mr. charm** visitor chairs were also used: Photos © Sedus

