

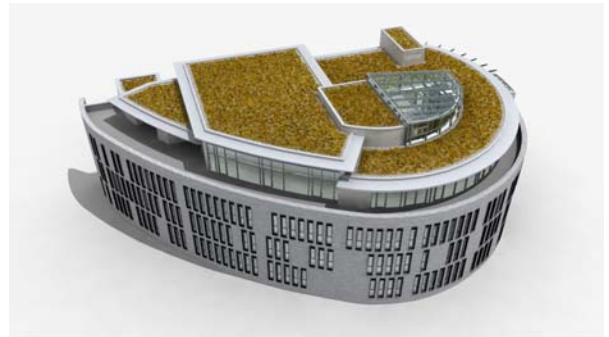
VR Bank Schwäbisch Hall, Germany

Architectural design: Wolfgang Kuhn, Schwäbisch Hall

Execution planning: Kraft + Kraft Architekten, Schwäbisch Hall

VR Bank Schwäbisch Hall-Crailsheim e G
Dietrich-Bonhoeffer-Platz 1
Schwäbisch Hall
Germany

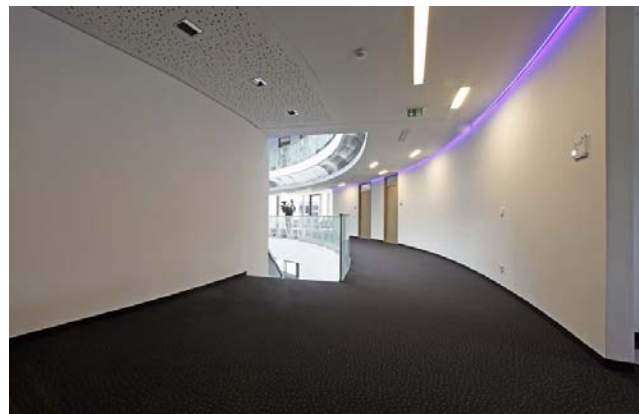
Completion date: 2011
Products:
**ambition, activation, zenon,
black dot**



The compact building is opened up by an atrium and a glass facade on the side where the main entrance is. This enables lots of daylight to enter the office floors.

Photos: © Stephan Paul Stuemmer, illustration on right above: Kraft + Kraft Architekten.

In the well-known south-Germany town Schwäbisch Hall with its many instances of historic buildings from the Middle Ages, a district along the River Kocher was reorganised by urban planners. A former prison had to give way to the new so-called "Kocher" quarter in a central position on the edges of the town directly next to the city wall. It was here that the new head offices of VR Bank Schwäbisch Hall-Crailsheim as well as a multi-story car park and rows of shops were created. With the almost mussel-shaped form of the building, the architects followed the principle of a "closed but open" construction. This expresses the security aspect of the bank but also makes reference to a little of the history of the former prison location. On the straight side, it is open thanks to a transparent window front and receives visitors and customers in a bright and spacious atrium. In this way, daylight enters the conference and consulting rooms on the inside, while the workstations were planned along the outer facade where there are optimum daylight conditions.



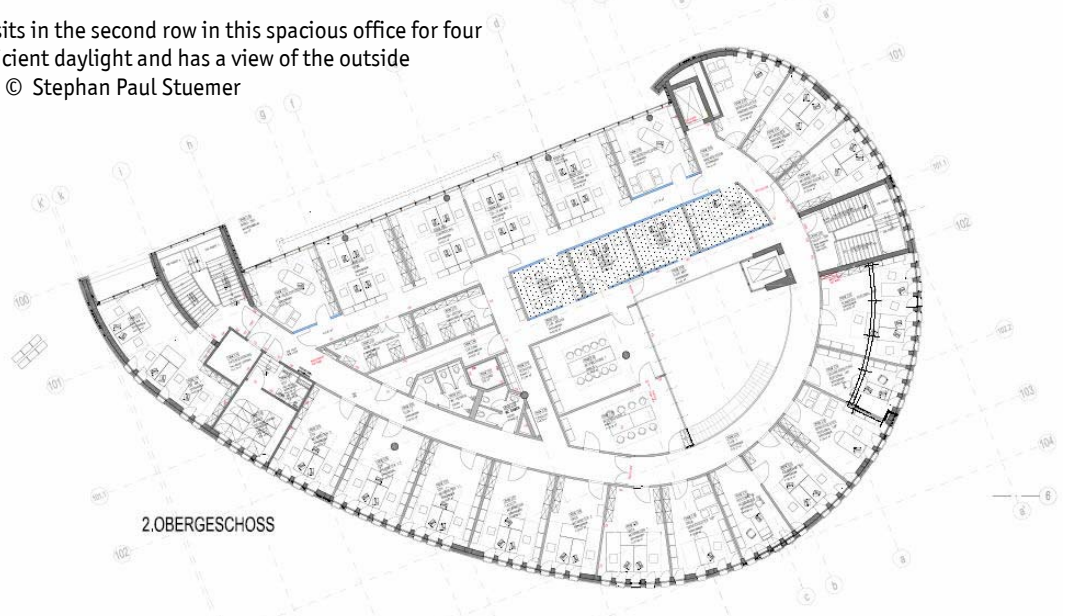
VR Bank Schwäbisch Hall, Germany
Architectural design: Wolfgang Kuhn, Schwäbisch Hall
Execution planning: Kraft + Kraft Architekten, Schwäbisch Hall

VR Bank Schwäbisch Hall-Crailsheim e G
Dietrich-Bonhoeffer-Platz 1
Schwäbisch Hall
Germany

Completion date: 2011
Products:
**ambition, activation, zenon,
black dot**



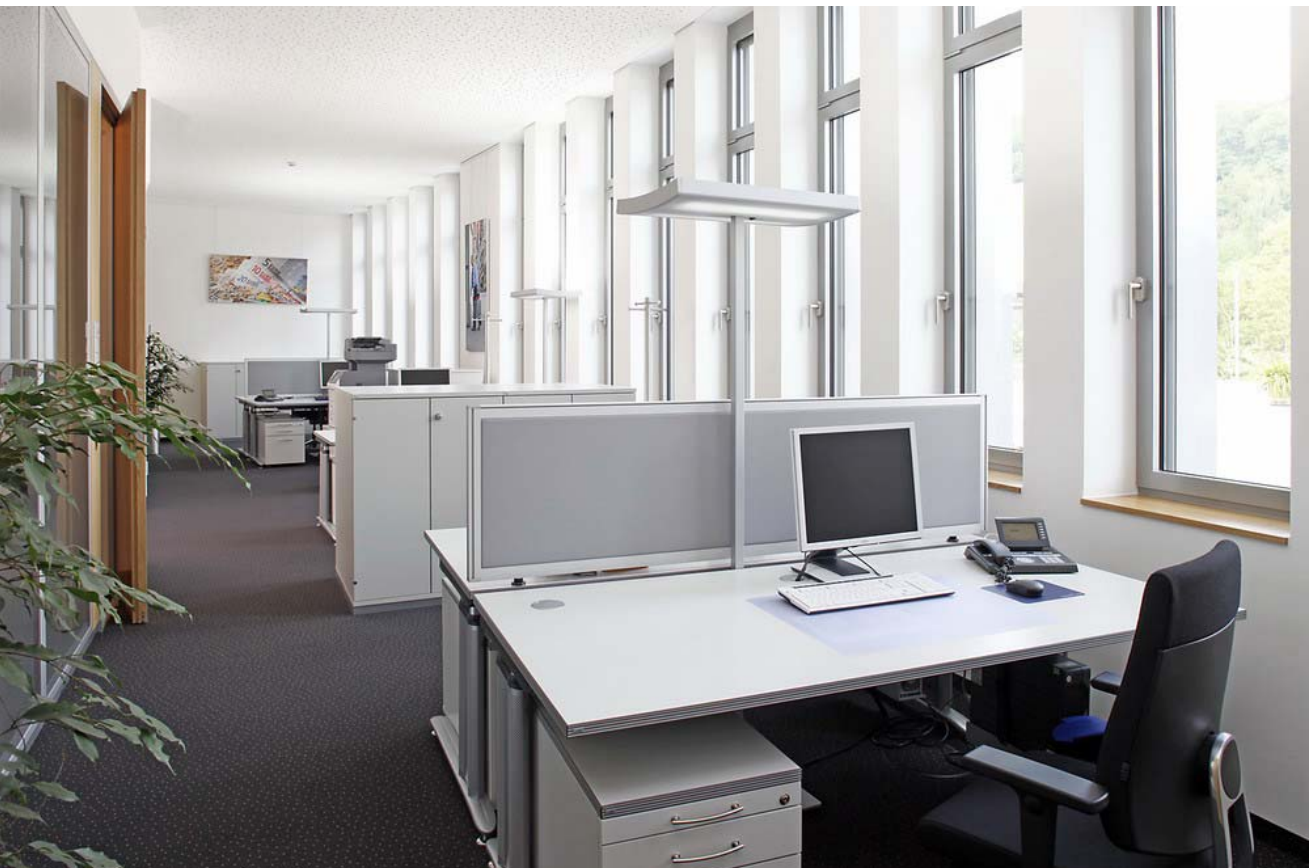
Even someone who sits in the second row in this spacious office for four people receives sufficient daylight and has a view of the outside vegetation. Photos: © Stephan Paul Stuemmer



VR Bank Schwäbisch Hall
Architectural design: Wolfgang Kuhn, Schwäbisch Hall
Execution planning: Kraft + Kraft Architekten, Schwäbisch Hall

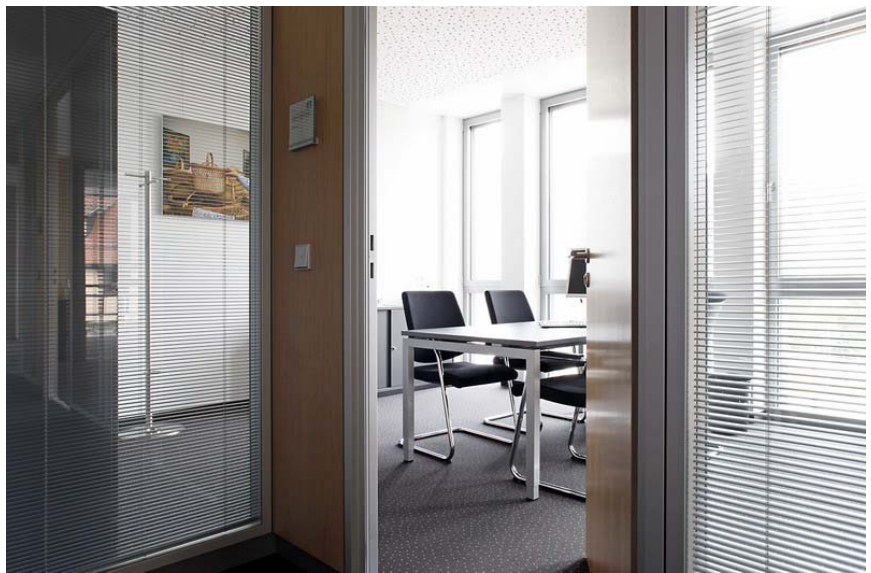
VR Bank Schwäbisch Hall-Crailsheim e G
Dietrich-Bonhoeffer-Platz 1
Schwäbisch Hall
Germany

Completion date: 2011
Products:
ambition, activation, zenon,
black dot



Workstations of investment consultants who can use meeting rooms on the inside for talks with customers. Venetian-blind-like systems in the glass partition walls provide the necessary privacy when necessary. For the desks, **activation** was used in combination with **ambition** storage furniture and the **black dot** family of chairs— both as a rotating chair and cantilever chair in meeting situations.

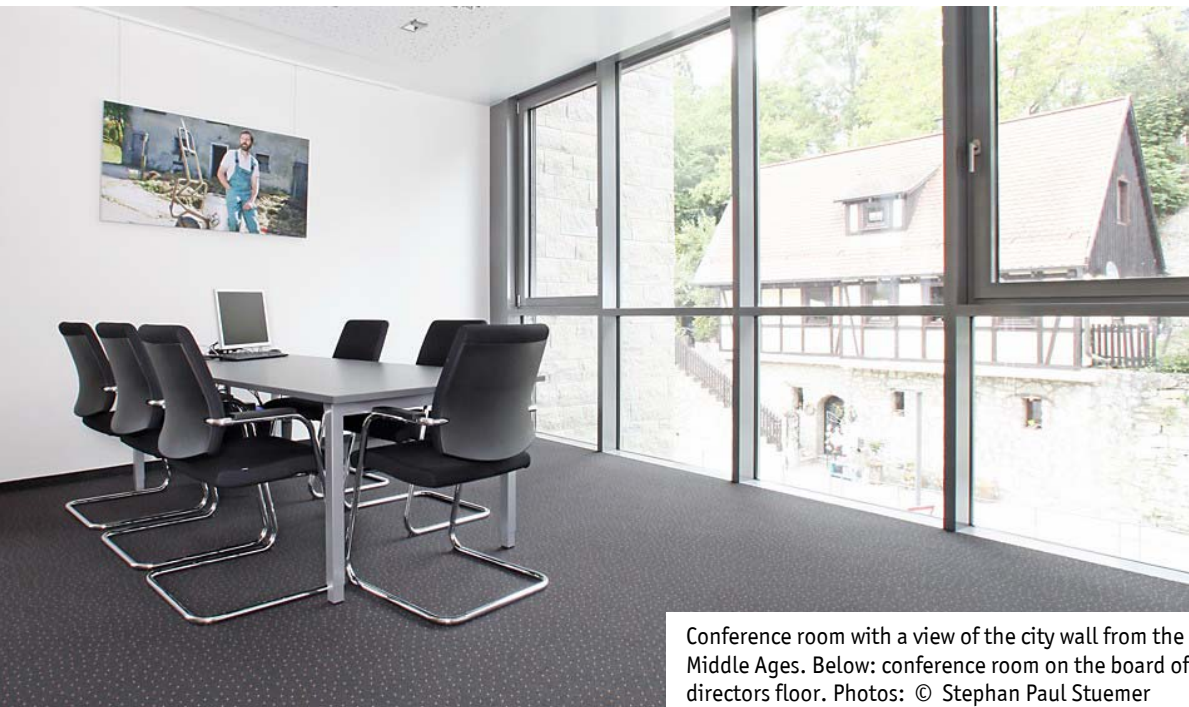
Photos: © Stephan Paul Stuemmer



VR Bank Schwäbisch Hall, Germany
Architectural design: Wolfgang Kuhn, Schwäbisch Hall
Execution planning: Kraft + Kraft Architekten, Schwäbisch Hall

VR Bank Schwäbisch Hall-Crailsheim e G
Dietrich-Bonhoeffer-Platz 1
Schwäbisch Hall
Germany

Completion date: 2011
Products:
**ambition, activation, zenon,
black dot**



Conference room with a view of the city wall from the Middle Ages. Below: conference room on the board of directors floor. Photos: © Stephan Paul Stuemmer

For conference furniture, **zenon** tables were used – with chrome-plated frame and with real wood veneer in the photo below. The chairs are also from the **black dot** series.

